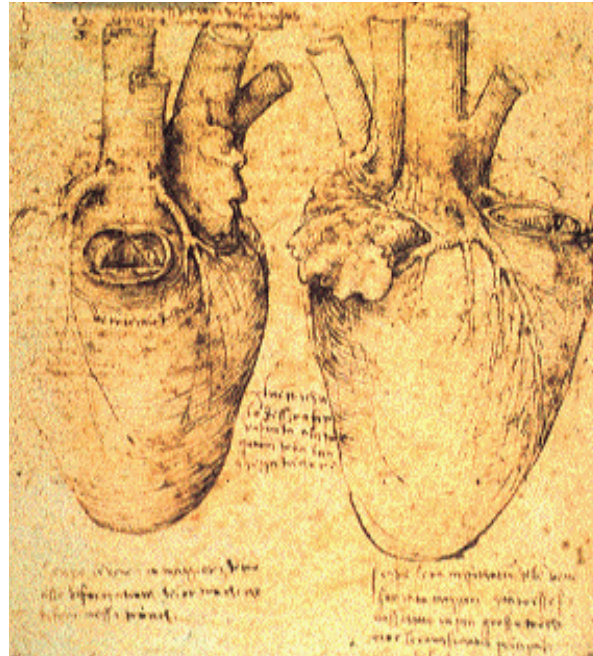
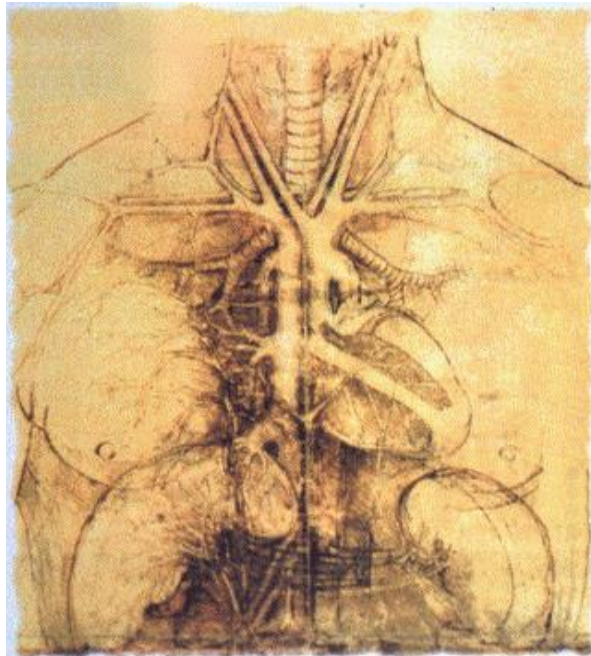


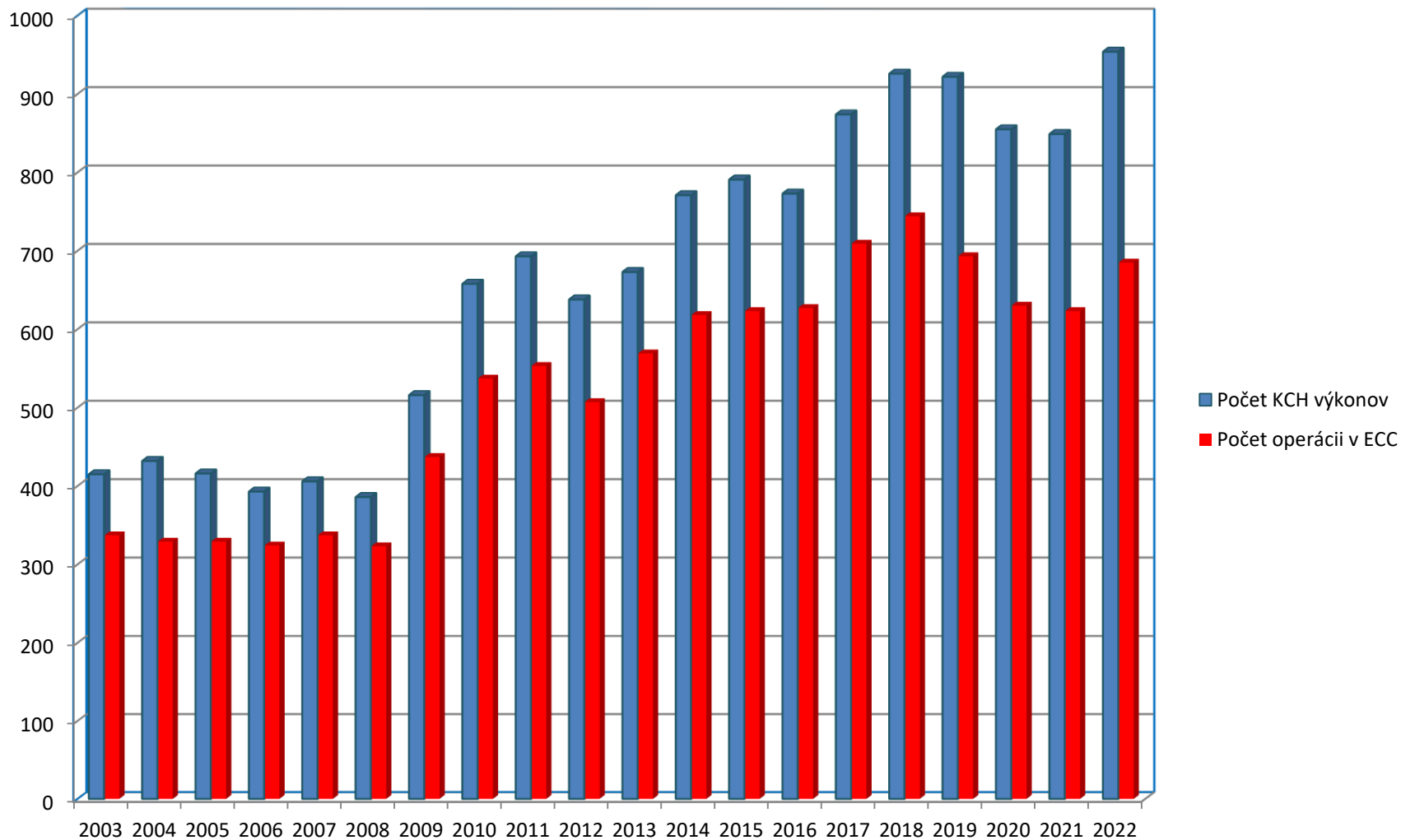
Akí sme boli posledných 20 rokov

**Oddelenie kardiochirurgie a
perfuziológie**

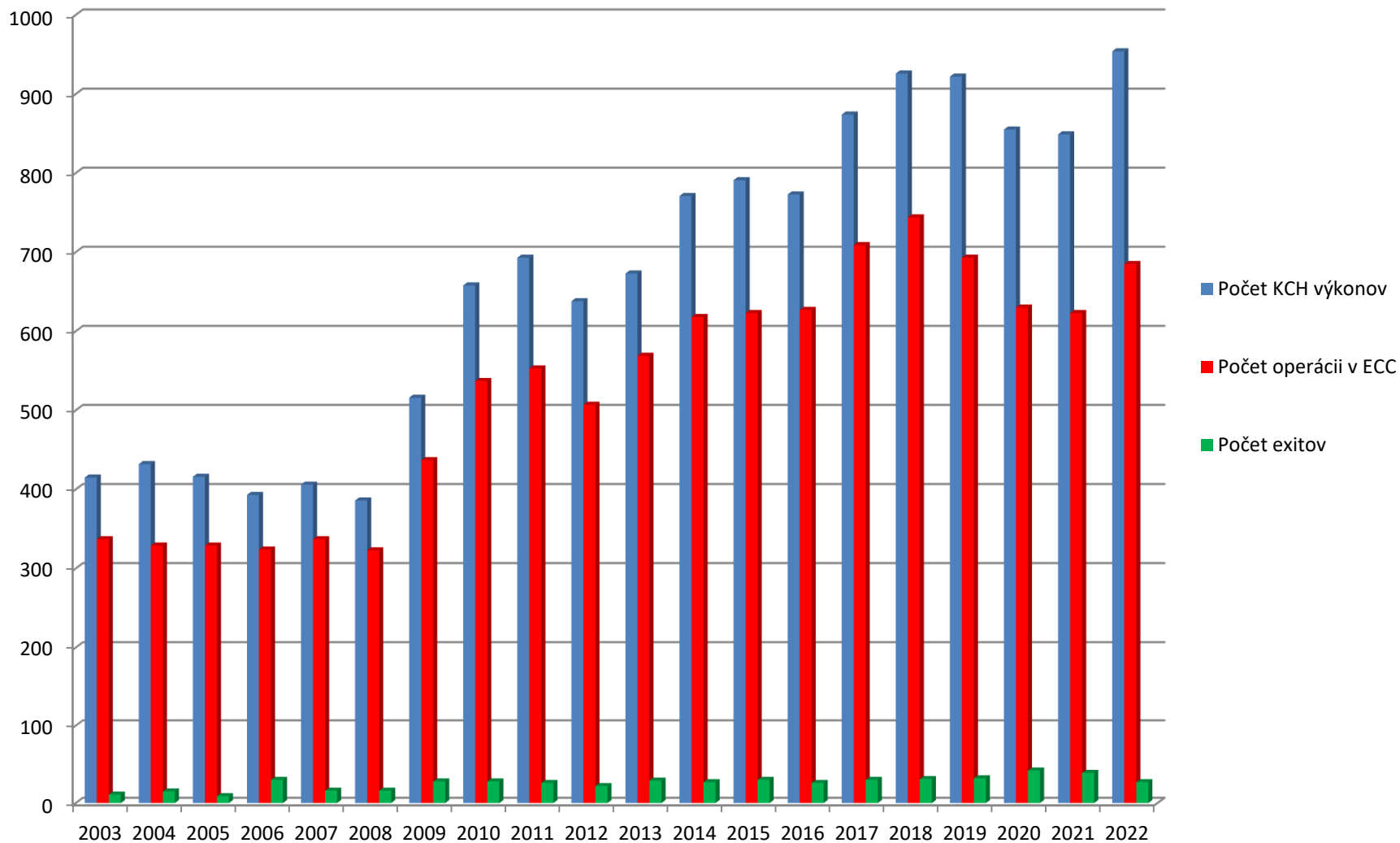
**II. Klinika kardiochirurgie SZU
SÚSCCH a.s. Banská Bystrica**



Odkiaľ ?



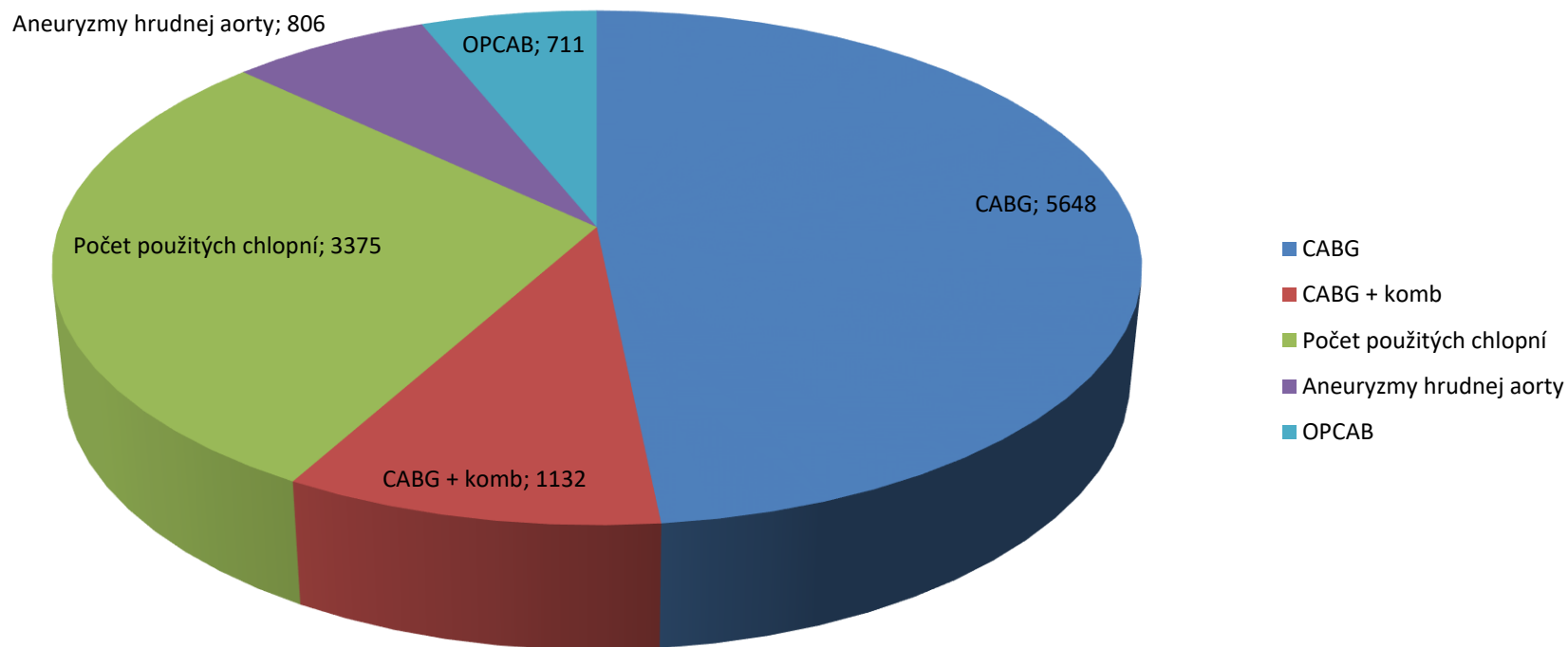
Počet KCH výkonov : 13 341
Počet operácií v ECC : 10 534



Počet KCH výkonov : 13 341

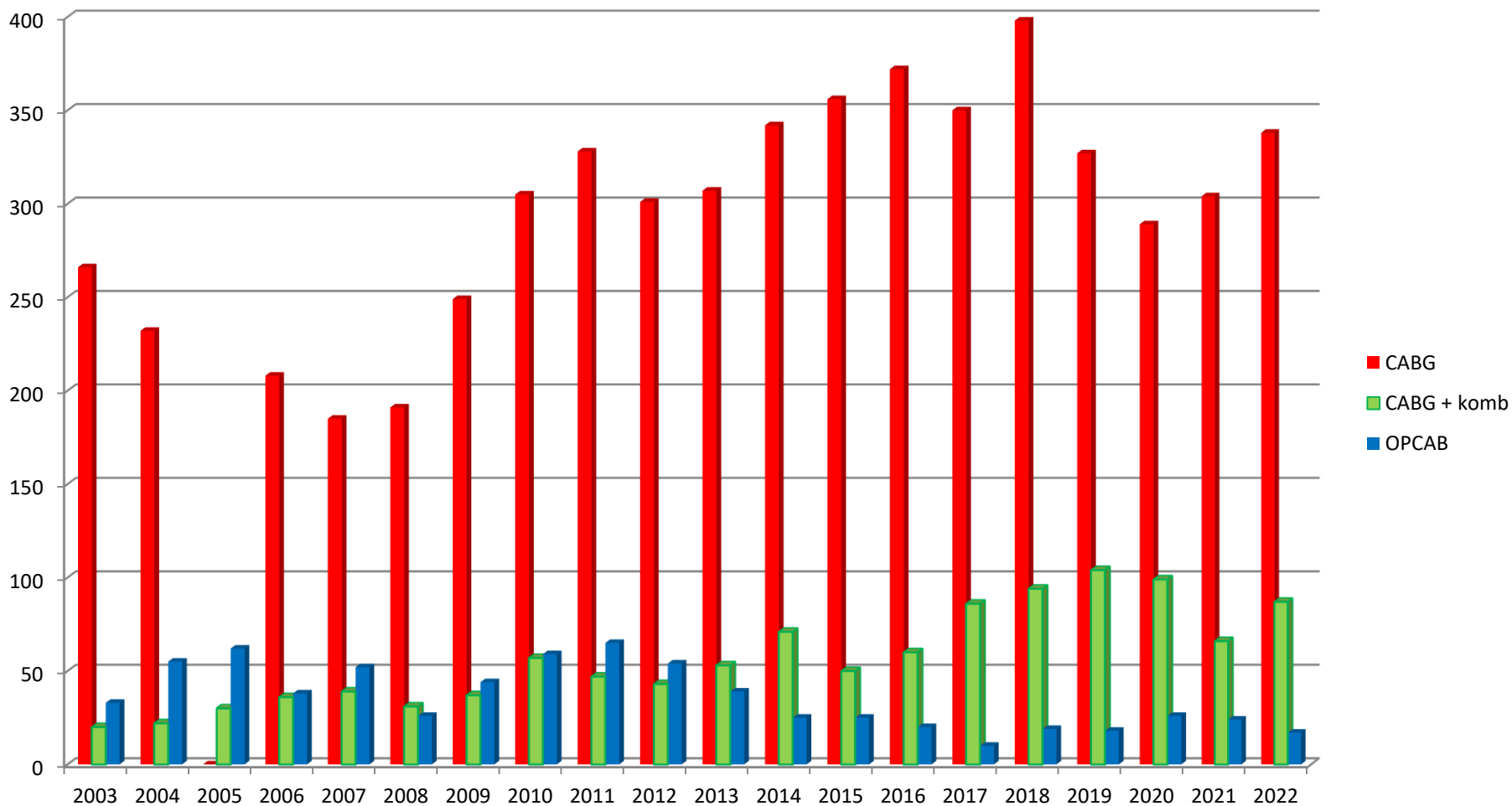
Počet operácií v ECC : 10 534

2003/2022



Počet KCH výkonov : 13 341

Počet operácií v ECC : 10 534



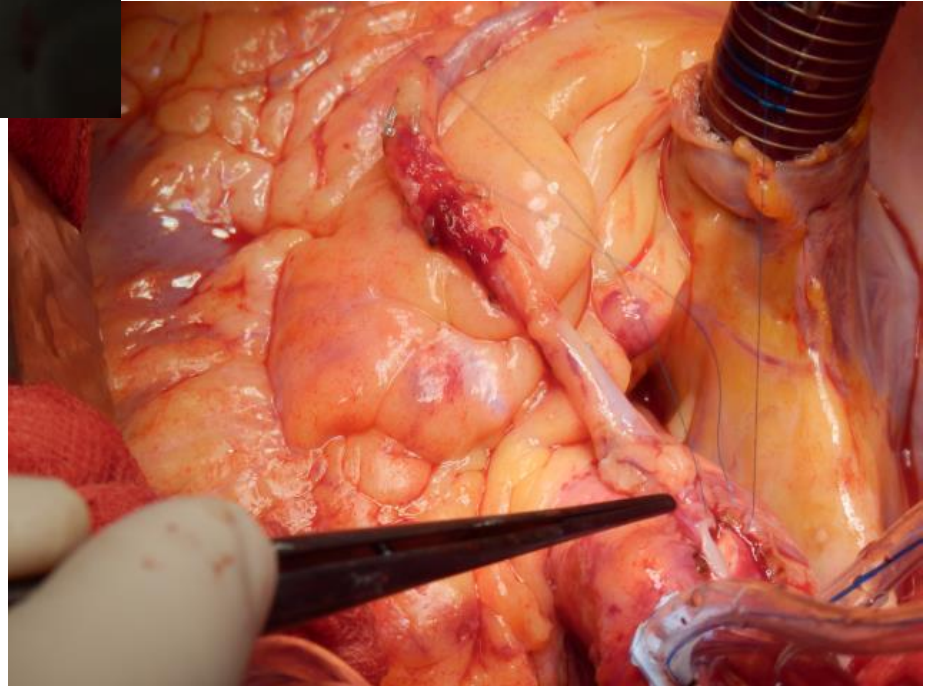
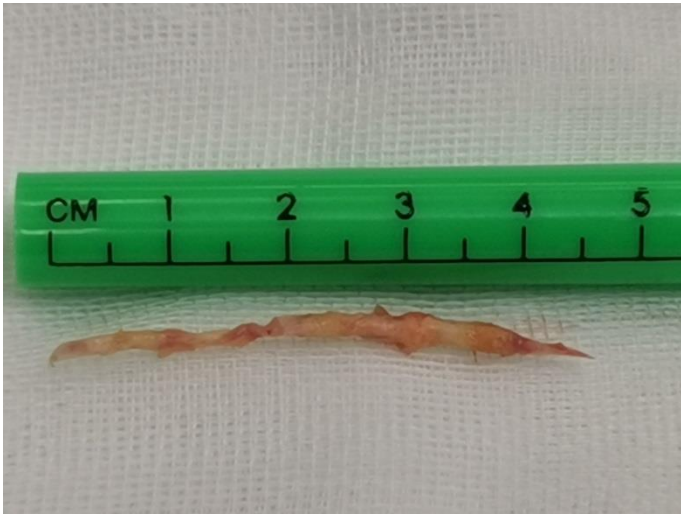
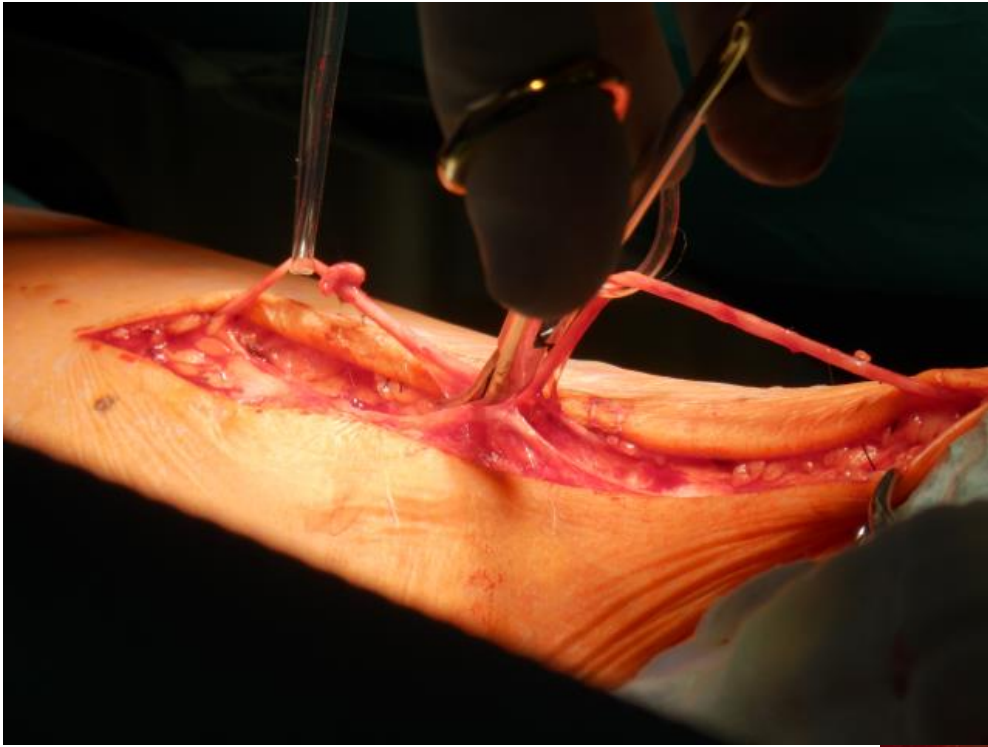
Počet KCH výkonov : 13 341

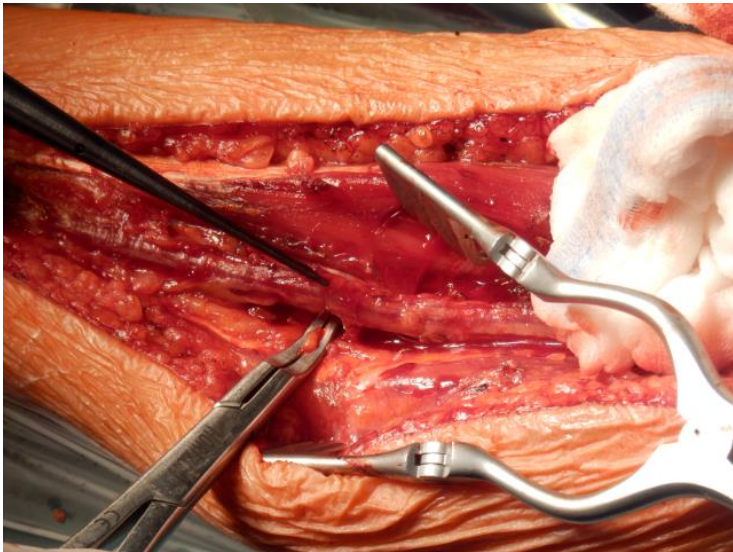
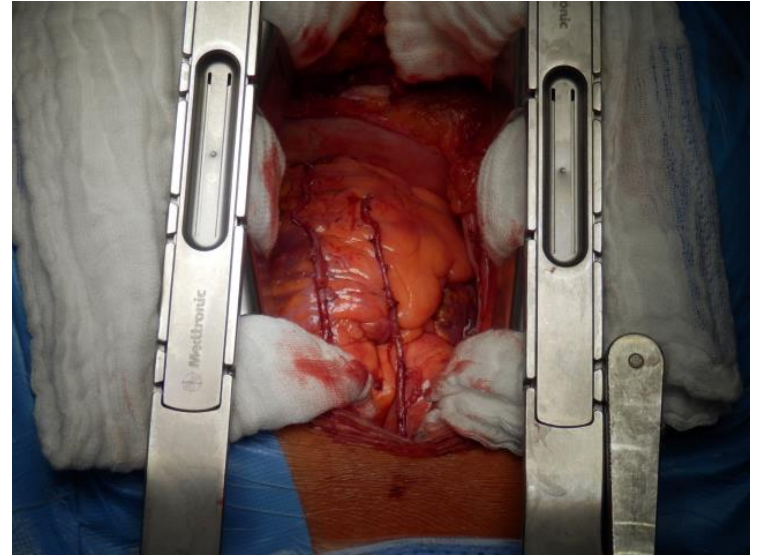
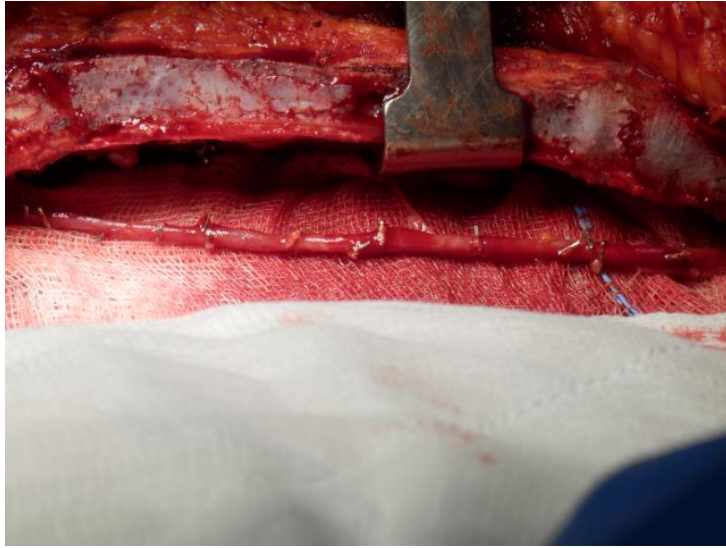
Počet operácií v ECC : 10 534

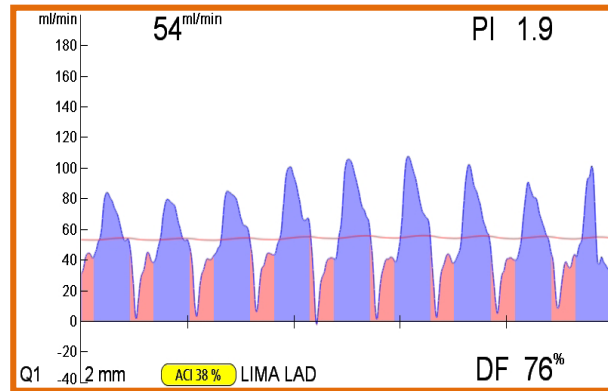
Počet CABG : 5648

Počet CABG + komb. : 1132

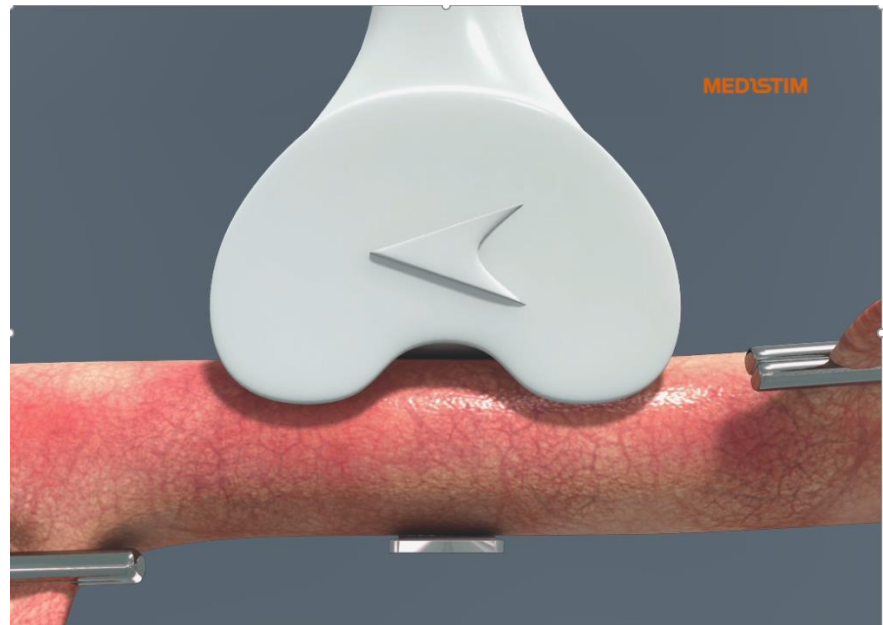
OPCAB : 711

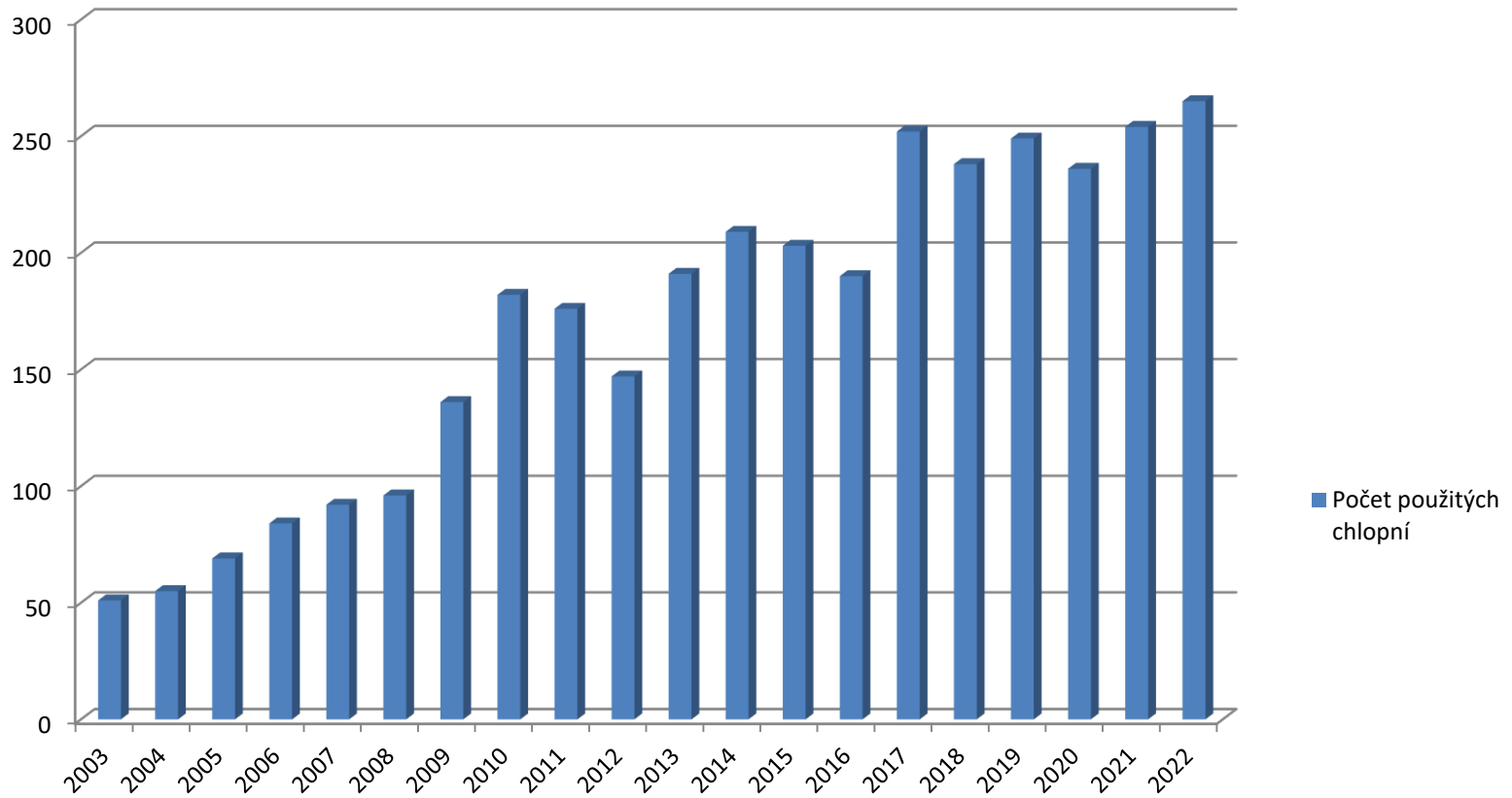






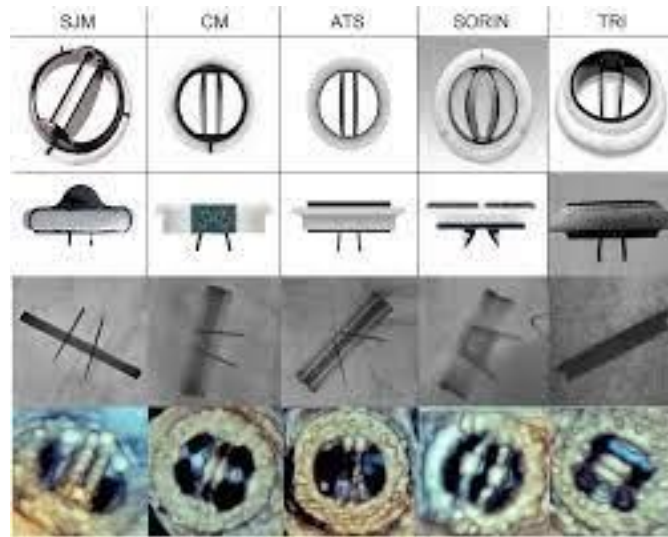
TTFM





Počet KCH výkonov : 13 341

Počet operácií v ECC : 10 534



Medtronic
Open Pivot



St Jude Medical
Regent



Sorin Group
Bicarbon Slimline



Sorin Group
Carbomedics



On-X Life
Technologies

a



Carpentier-Edwards
PERIMOUNT™



Carpentier-Edwards
Magna Ease™



St. Jude Medical
Trifecta™



b



Medtronic
Mosaic®



Medtronic
Hancock® II



St. Jude Medical
Biocor™

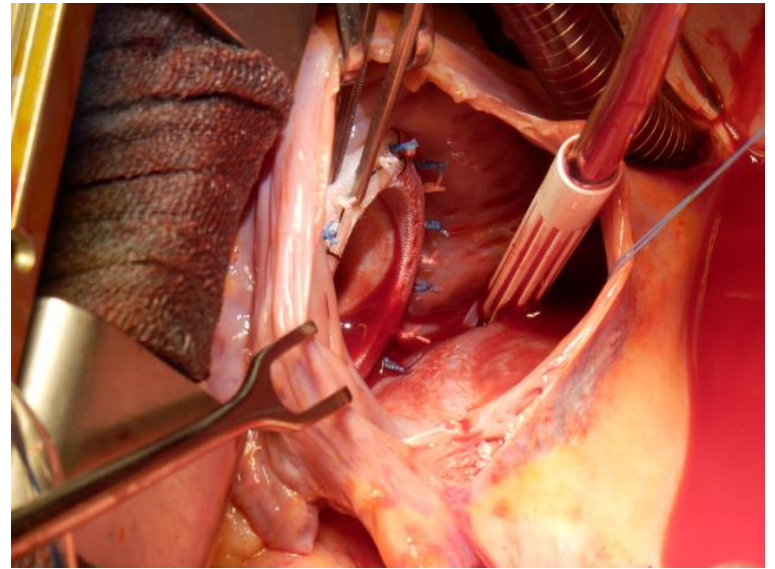
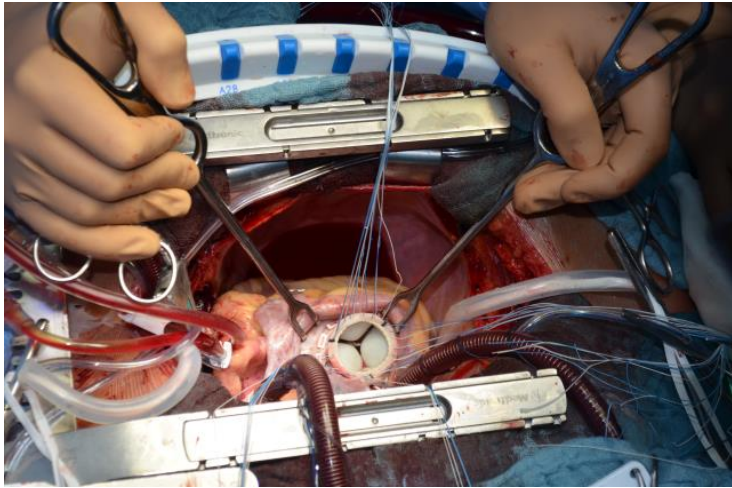
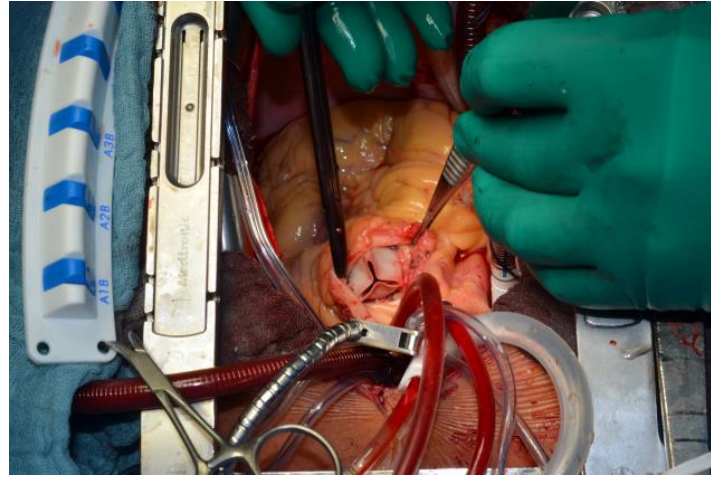
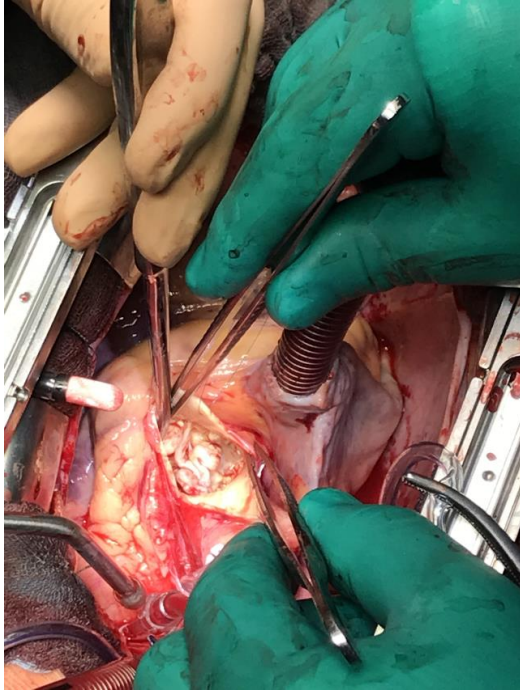
c

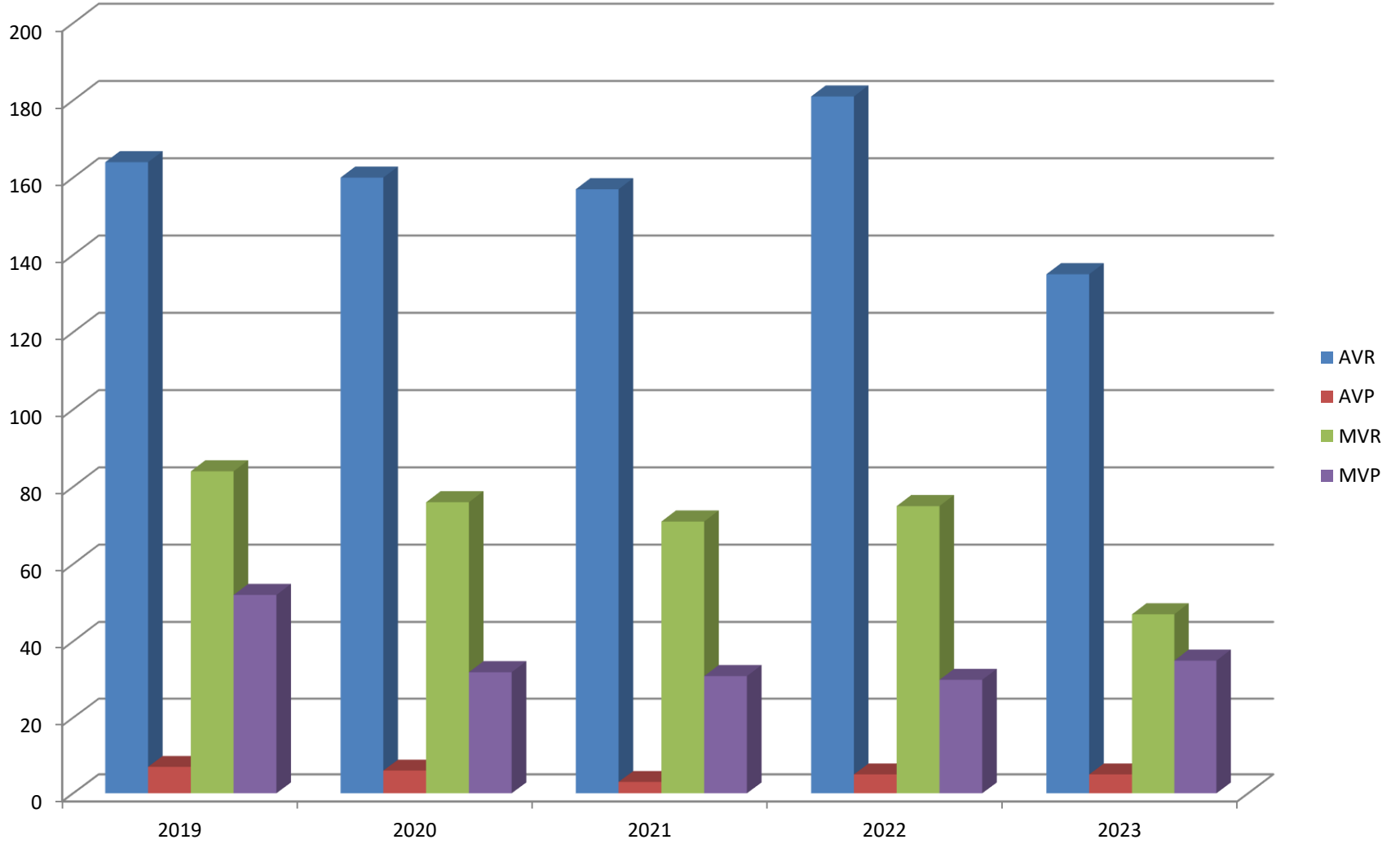


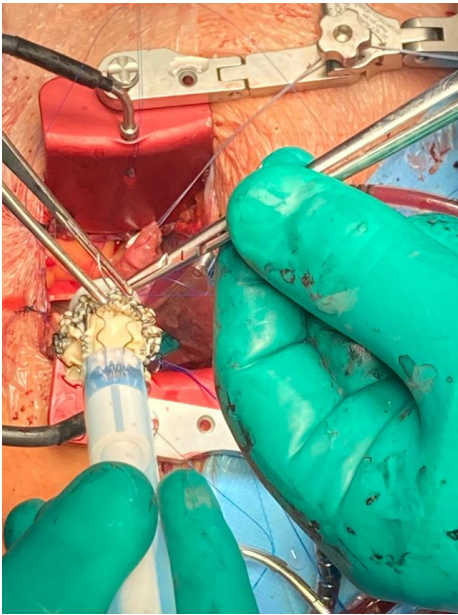
Medtronic
Freestyle®



St. Jude Medical
Toronto SPV®

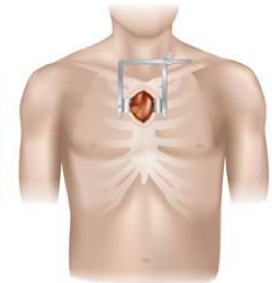
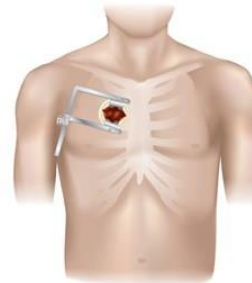
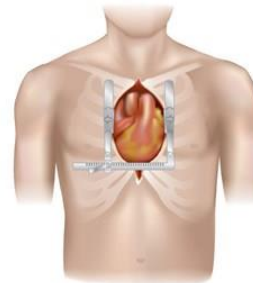






Conventional

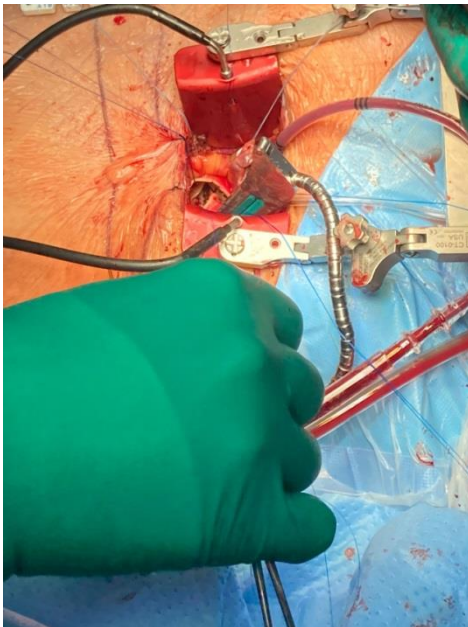
Minimally-invasive

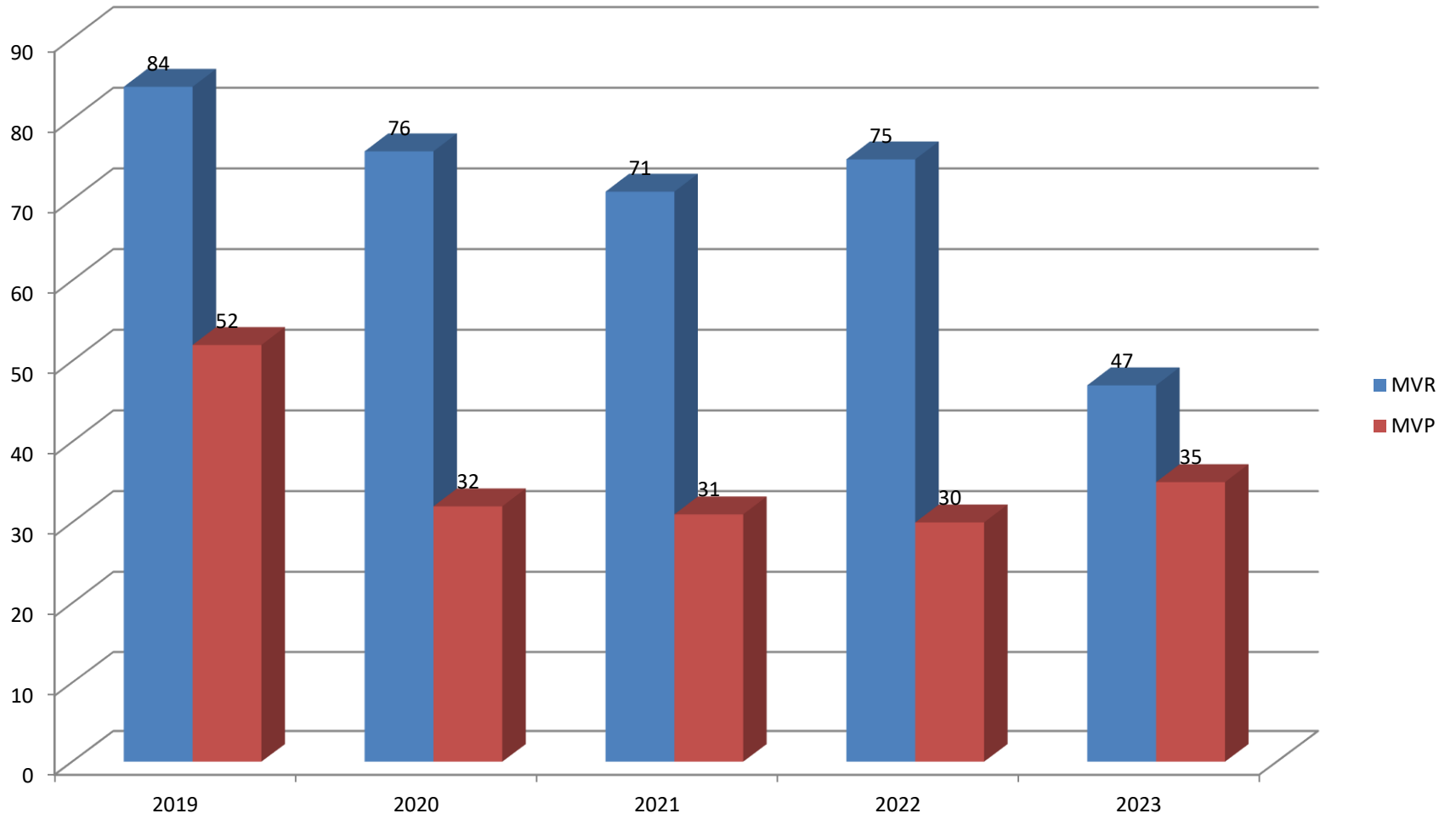


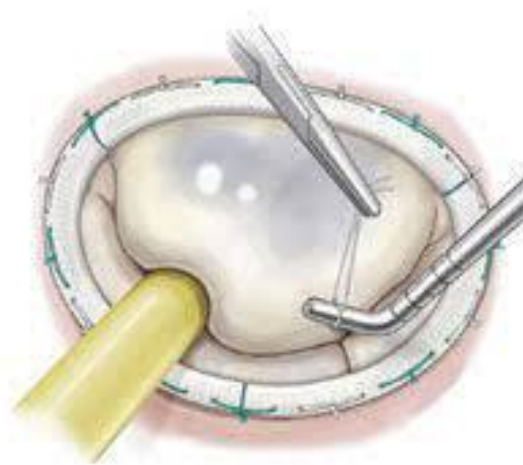
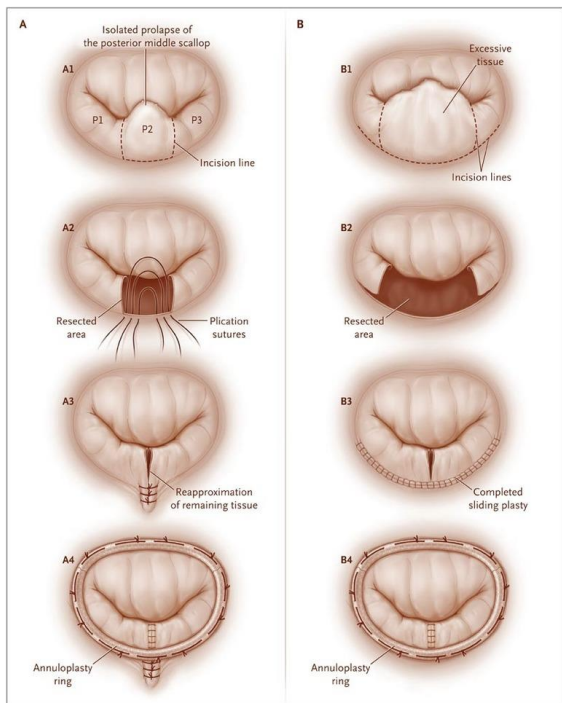
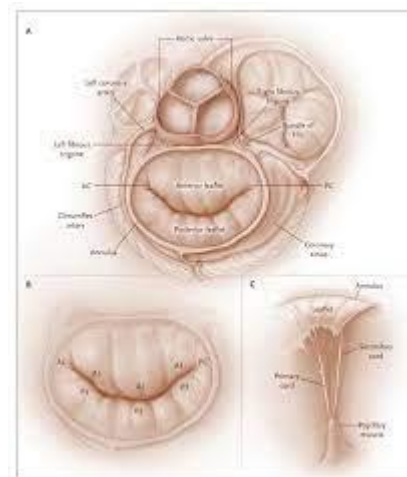
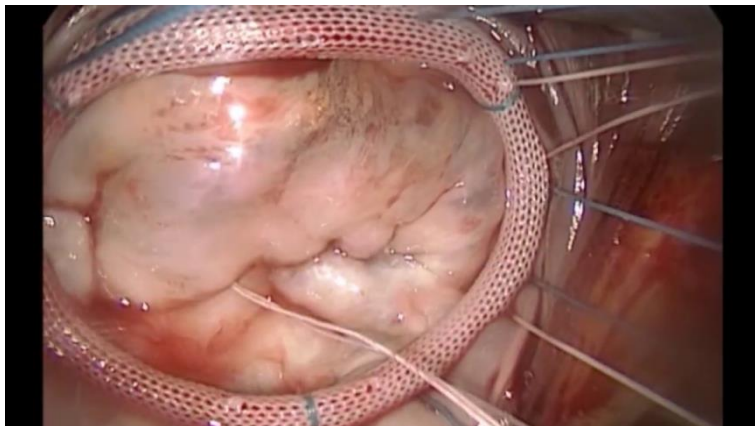
Sternotomy

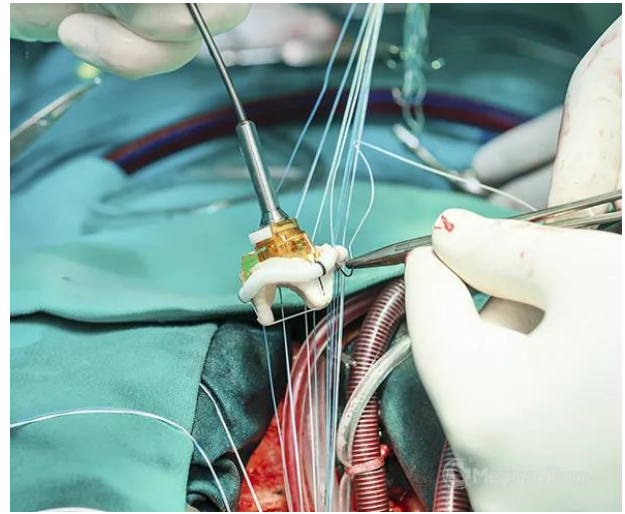
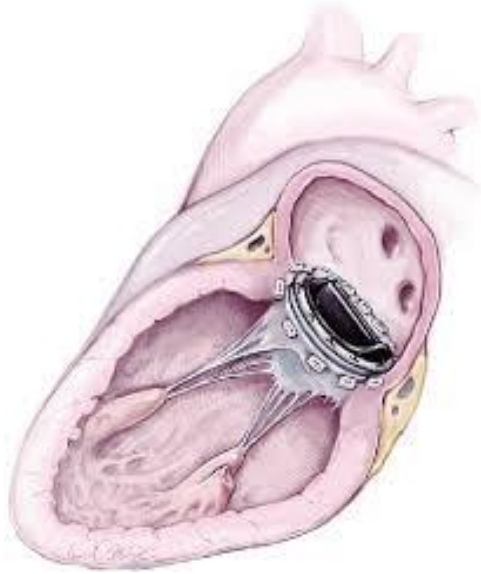
Mini-thoracotomy

Hemi-sternotomy







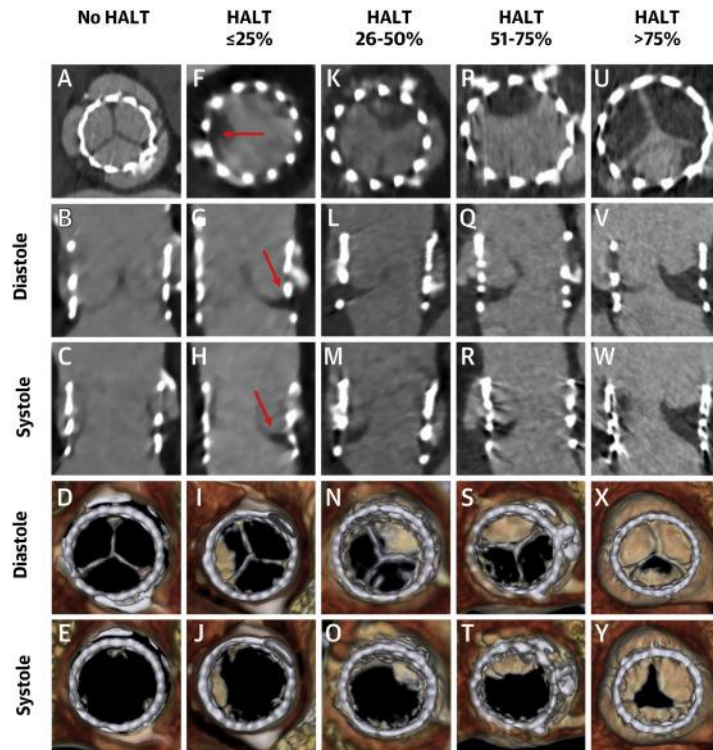




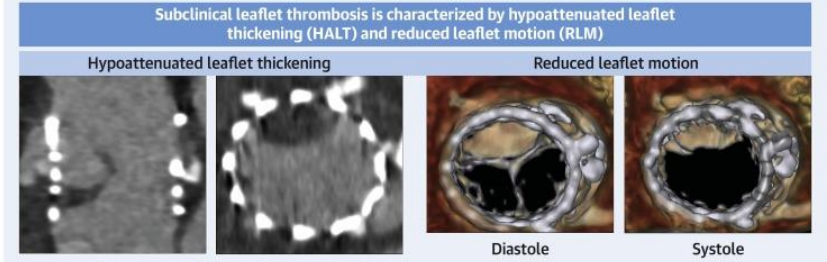
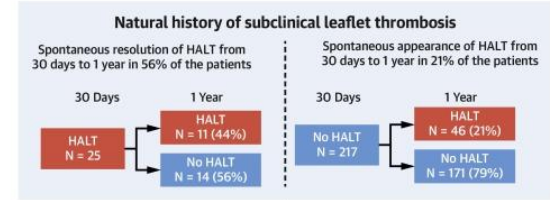
Original Investigation

Subclinical Leaflet Thrombosis in Transcatheter and Surgical Bioprosthetic Valves: PARTNER 3 Cardiac Computed Tomography Substudy

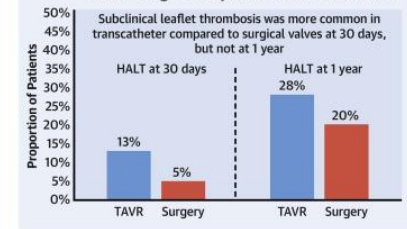
Raj R. Makkar MD^a, Philipp Blanke MD^b, Jonathon Leipsic MD^b, Vinod Thourani MD^c, Tarun Chakravarty MD^a, David Brown MD^d, Alfredo Trento MD^a, Robert Guyton MD^e, Vasilis Babaliaros MD^e, Mathew Williams MD^f, Hasan Jilaihawi MD^f, Susheel Kodali MD^g, Isaac George MD^g, Michael Lu PhD^h, James M. McCabe MDⁱ, John Friedman MD^a, Richard Smalling MD^j, Shing Chiu Wong MD^k ... Martin B. Leon MD^g



CENTRAL ILLUSTRATION: Subclinical Leaflet Thrombosis of Transcatheter and Surgical Bioprosthetic Aortic Valves



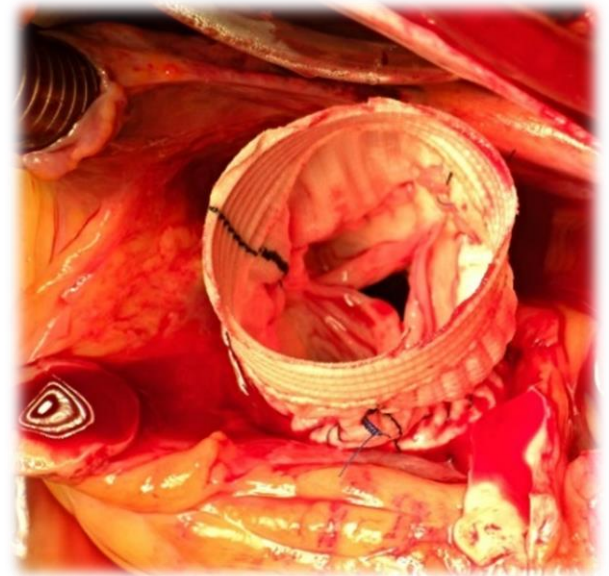
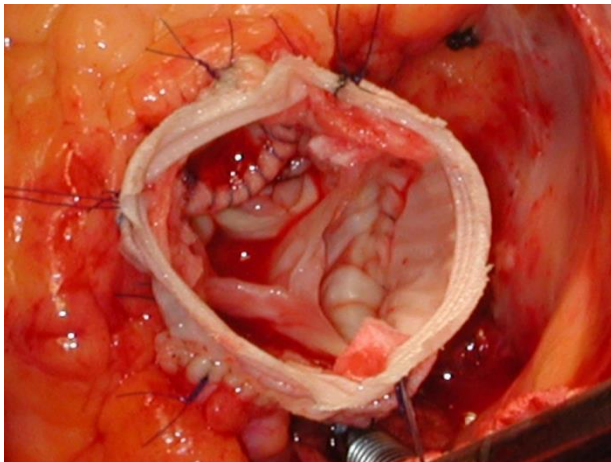
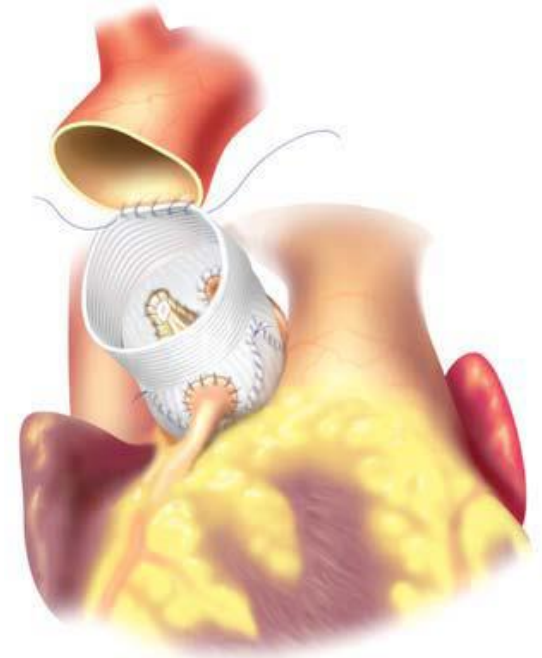
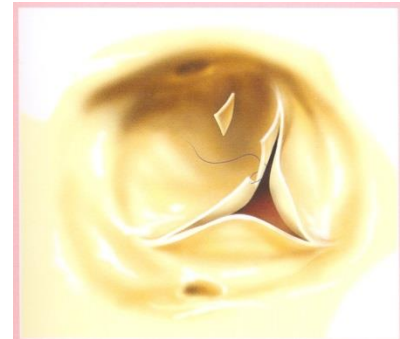
Subclinical Leaflet Thrombosis in Transcatheter Versus Surgical Bioprosthetic Aortic Valves



Impact of subclinical leaflet thrombosis on valve hemodynamics and clinical outcomes

- No difference in aortic valve mean gradients between patients with or without HALT at 30 days or 1 year
- Increased aortic valve gradients in patients with increasing severity of HALT; and in patients with persistent HALT at 30 days and 1 year
- Increased rates of clinical valve thrombosis and composite endpoint of stroke/transient ischemic attack/thromboembolic complications in patients with HALT

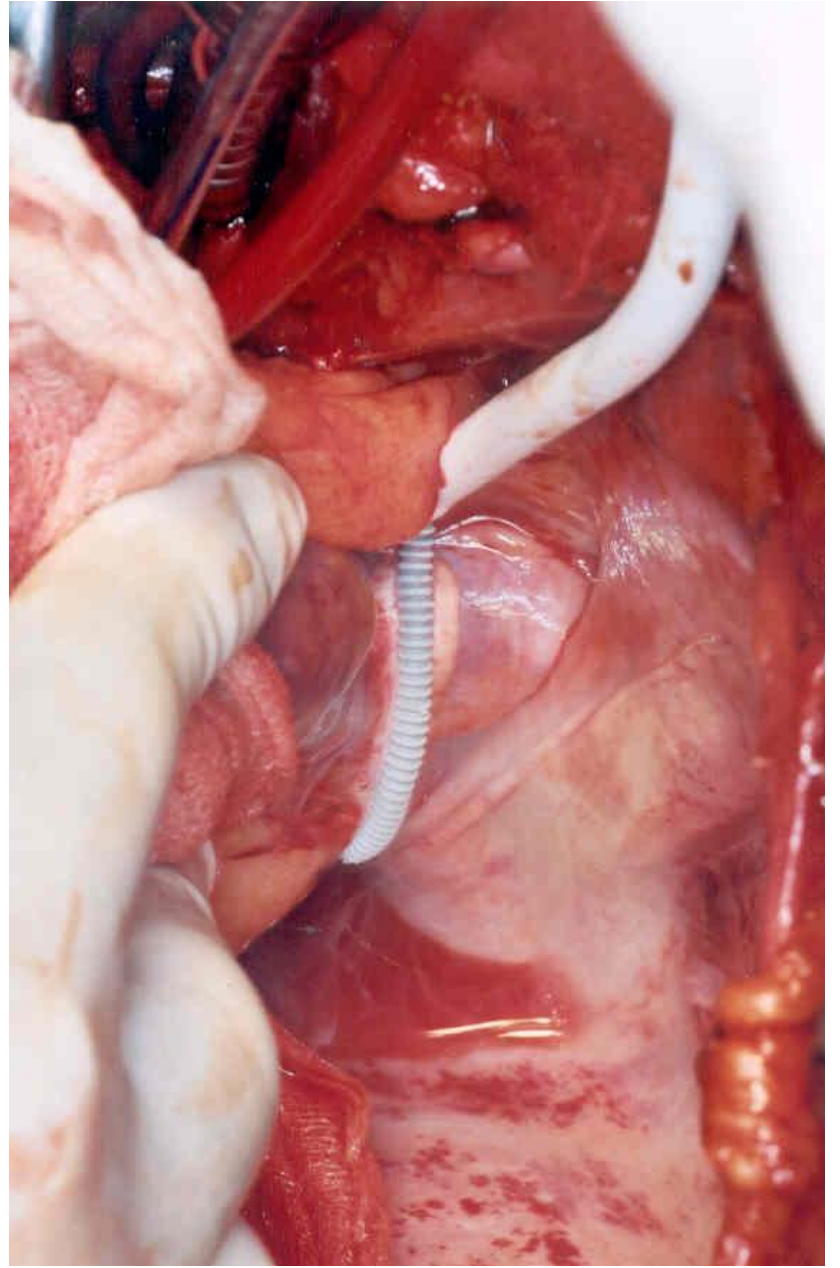
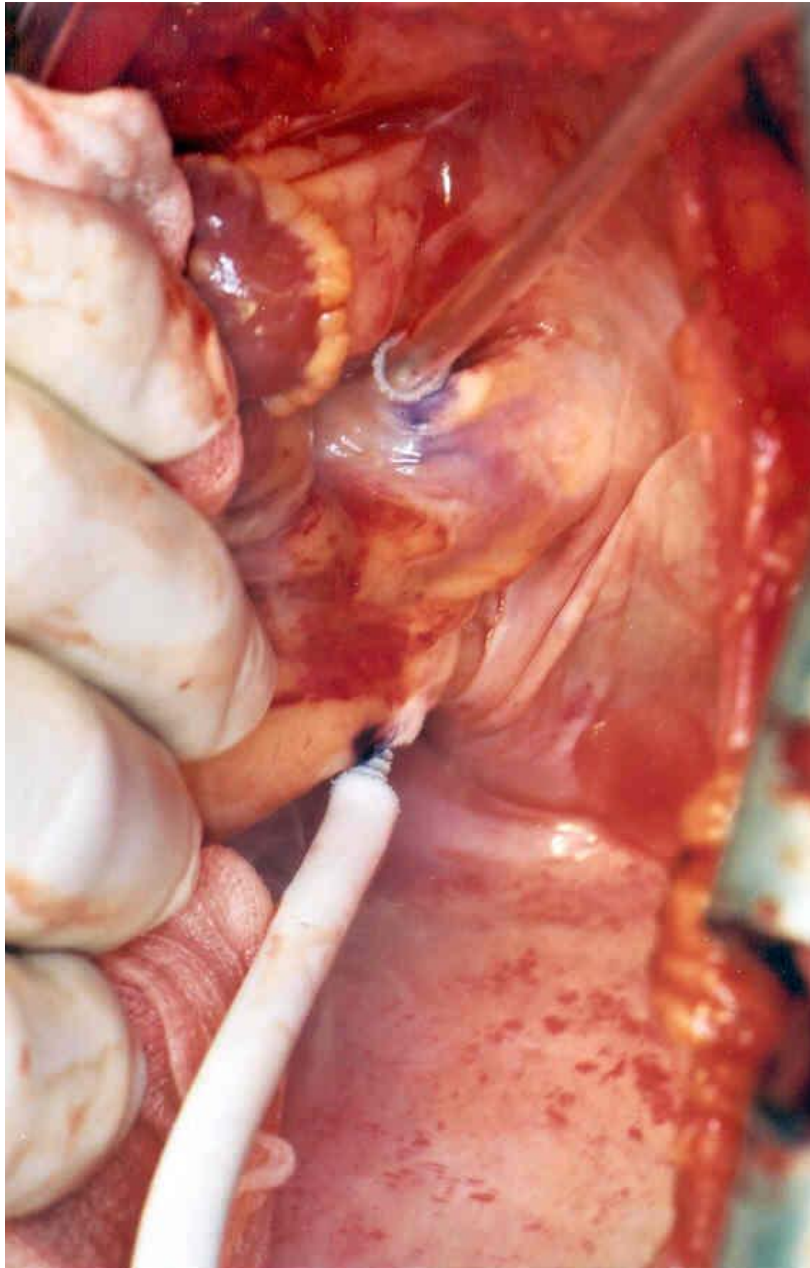
Makkar, R.R. et al. J Am Coll Cardiol. 2020;75(24):3003-15.





Kryoablácia :

- Argónová technológia
- Teplota až -160°C
- 60s aplikácia
- Možnosť individuálnej úpravy času a teploty



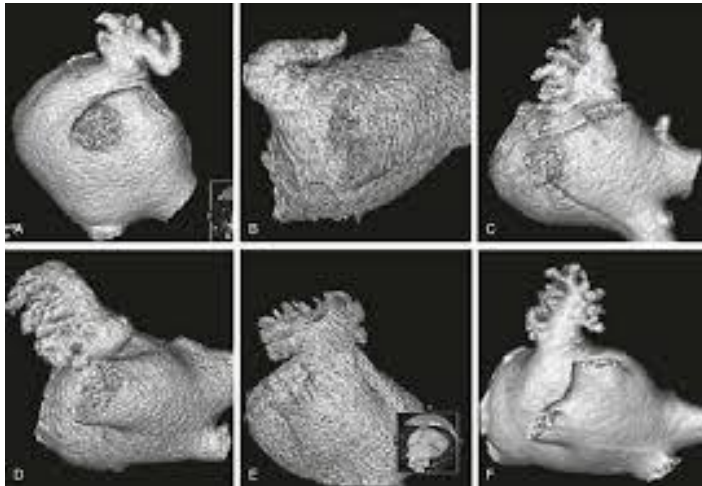


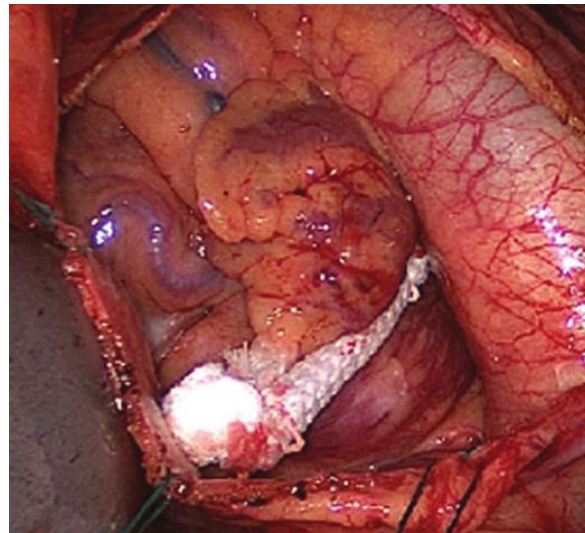
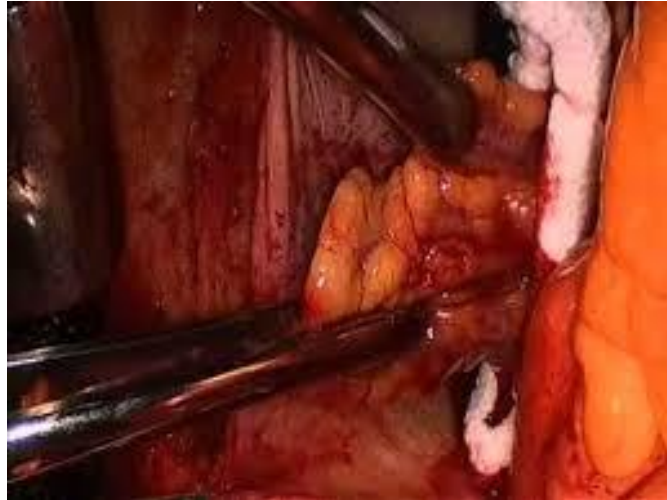
- Ligatúra

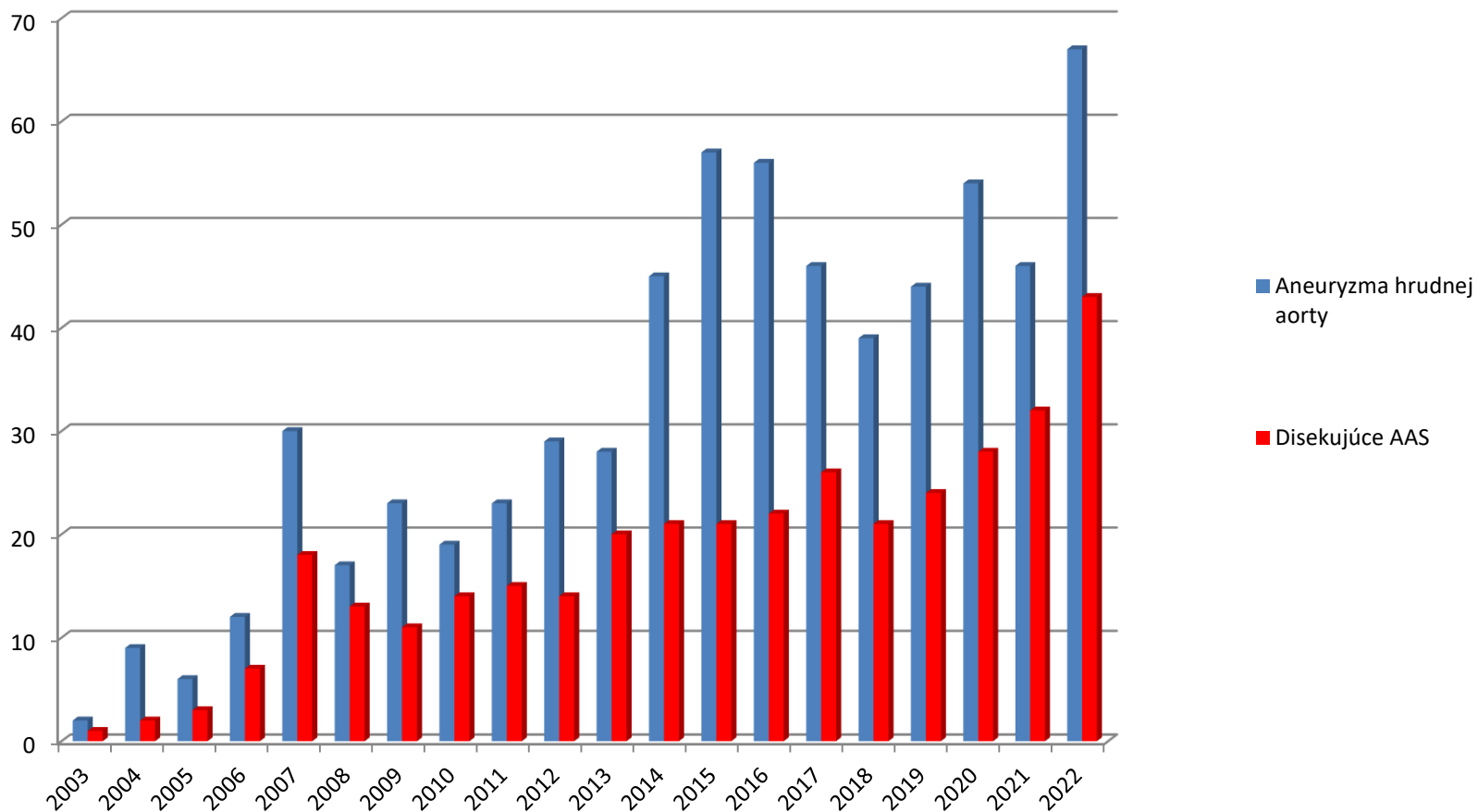
- Excízia

- Sutúra

- Stapler/Okludér



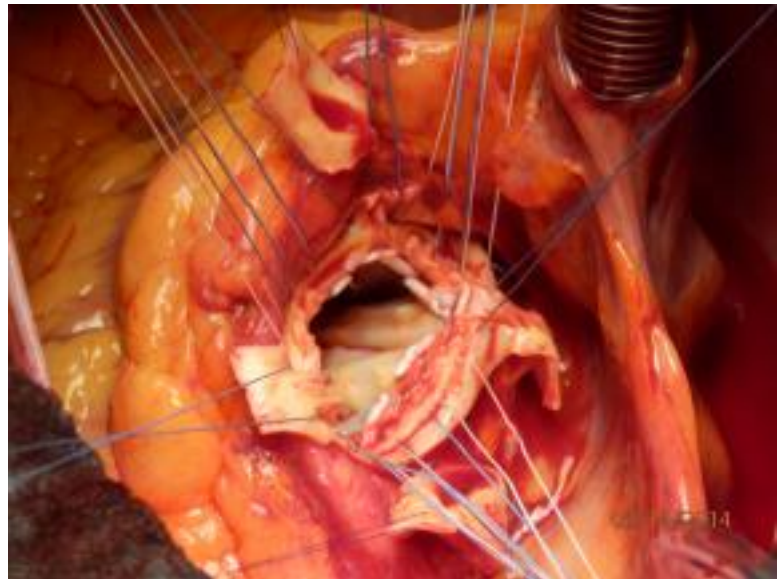
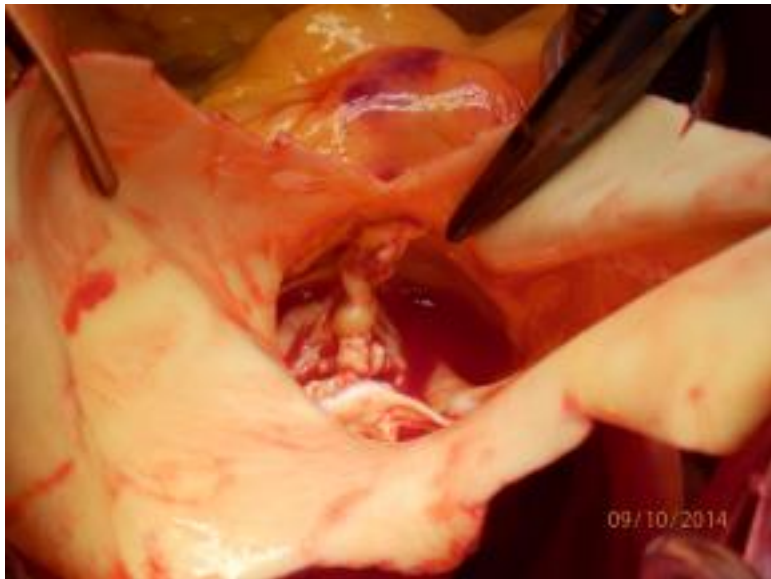
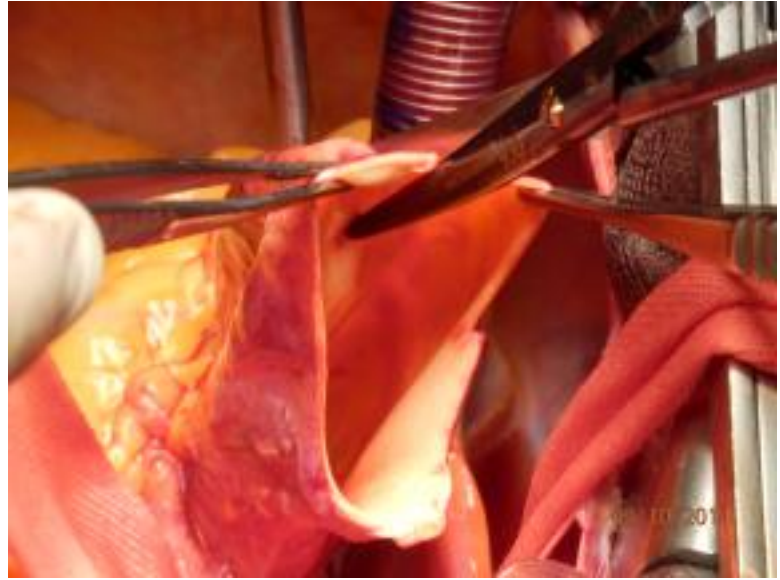


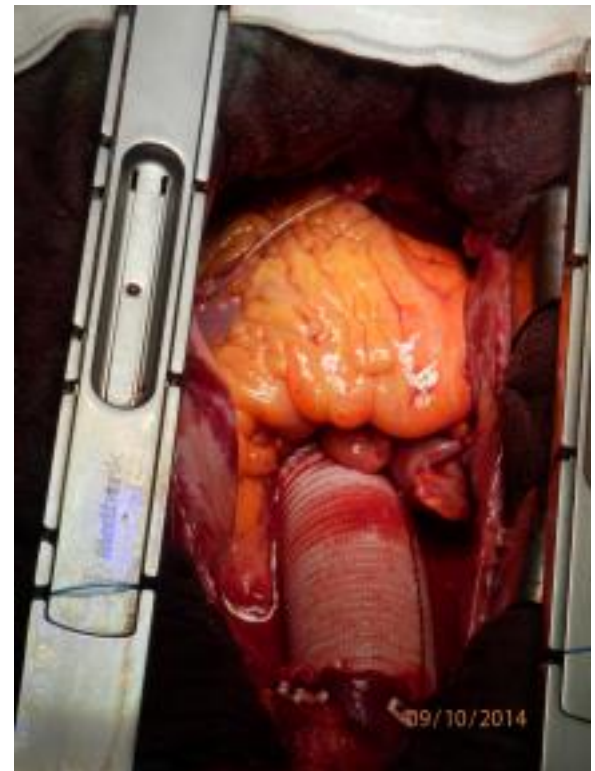
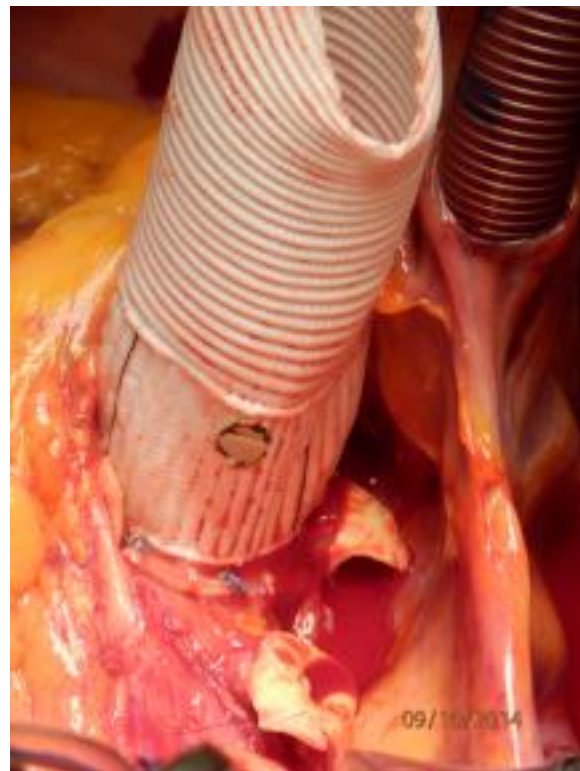
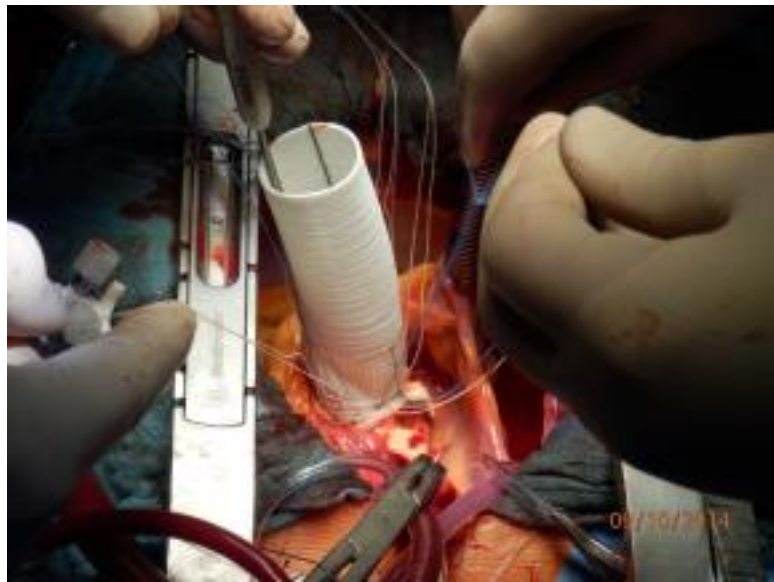
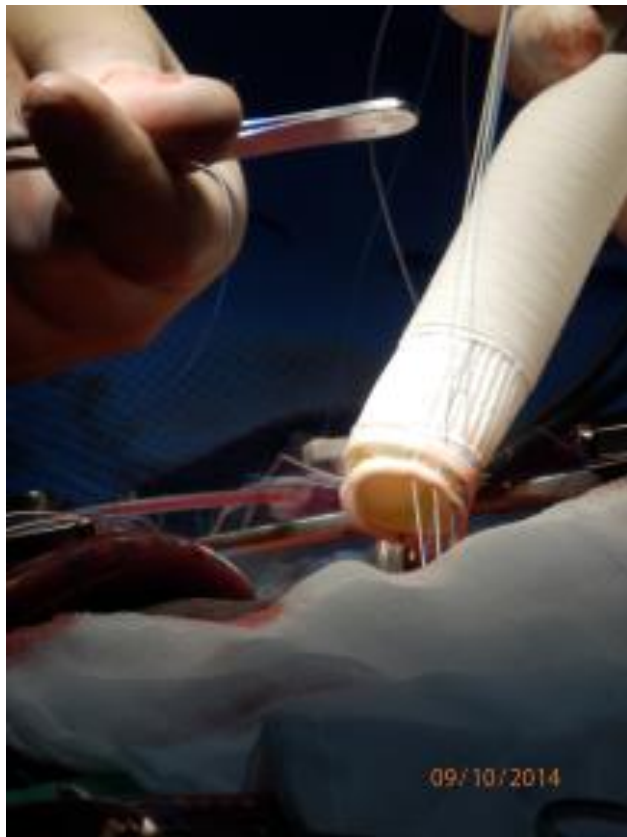


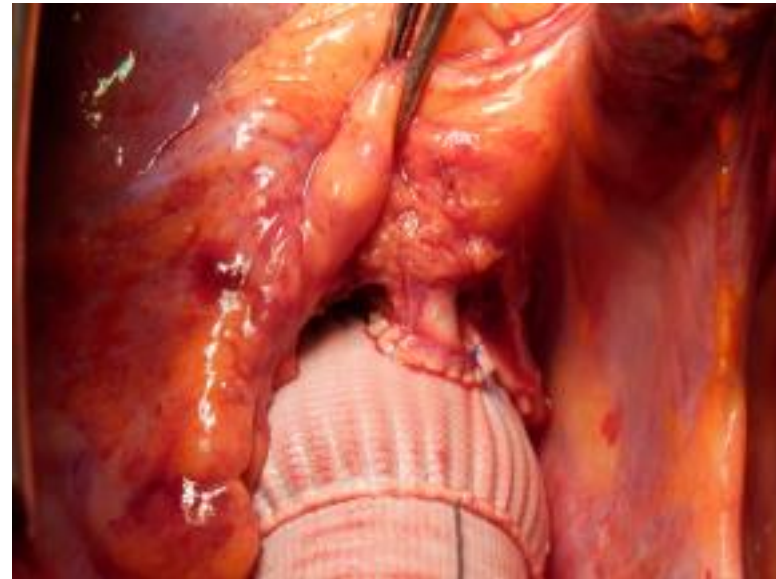
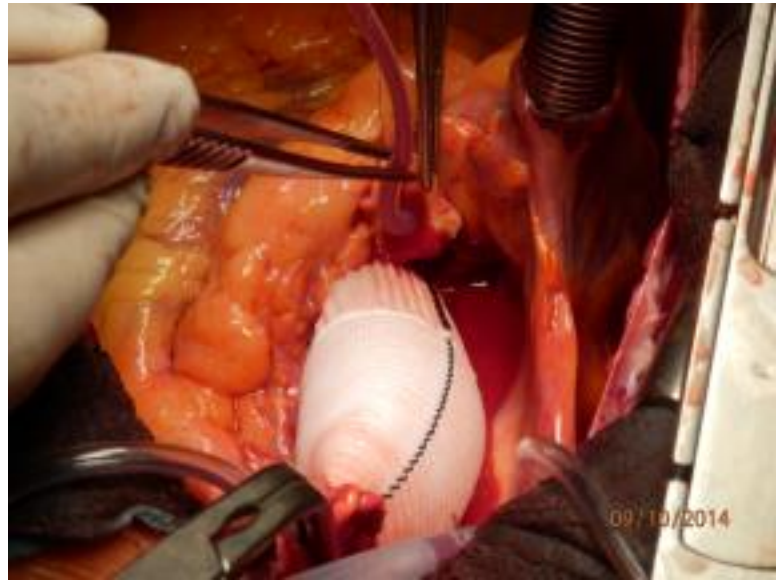
Počet KCH výkonov : 13 341

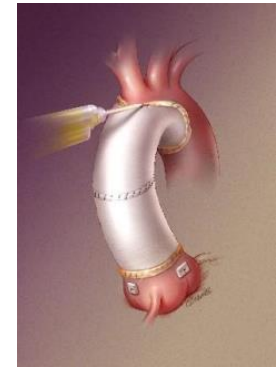
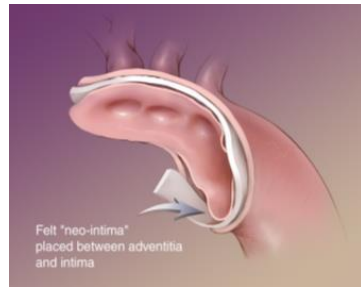
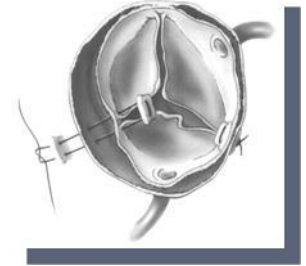
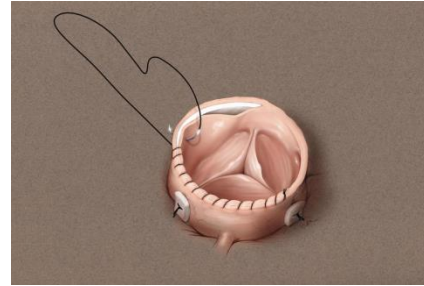
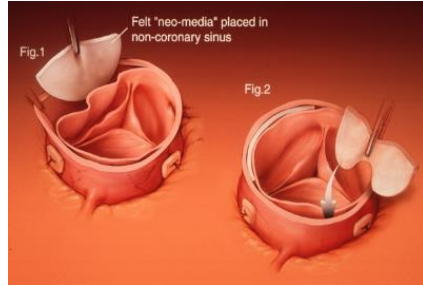
Počet operácií v ECC : 10 534

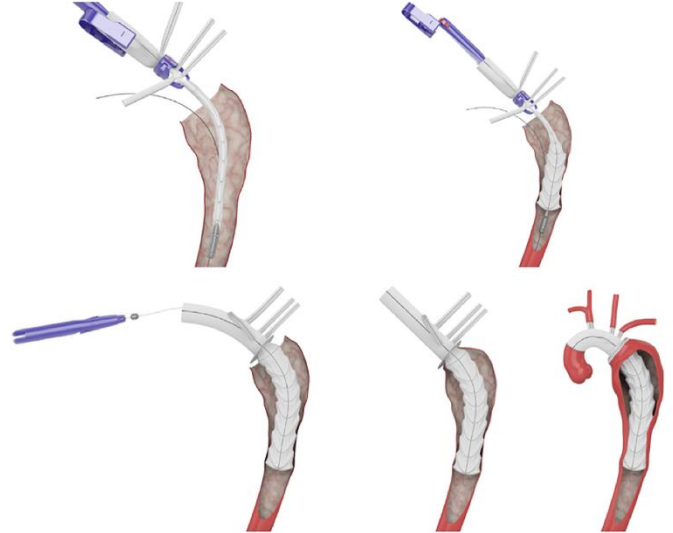
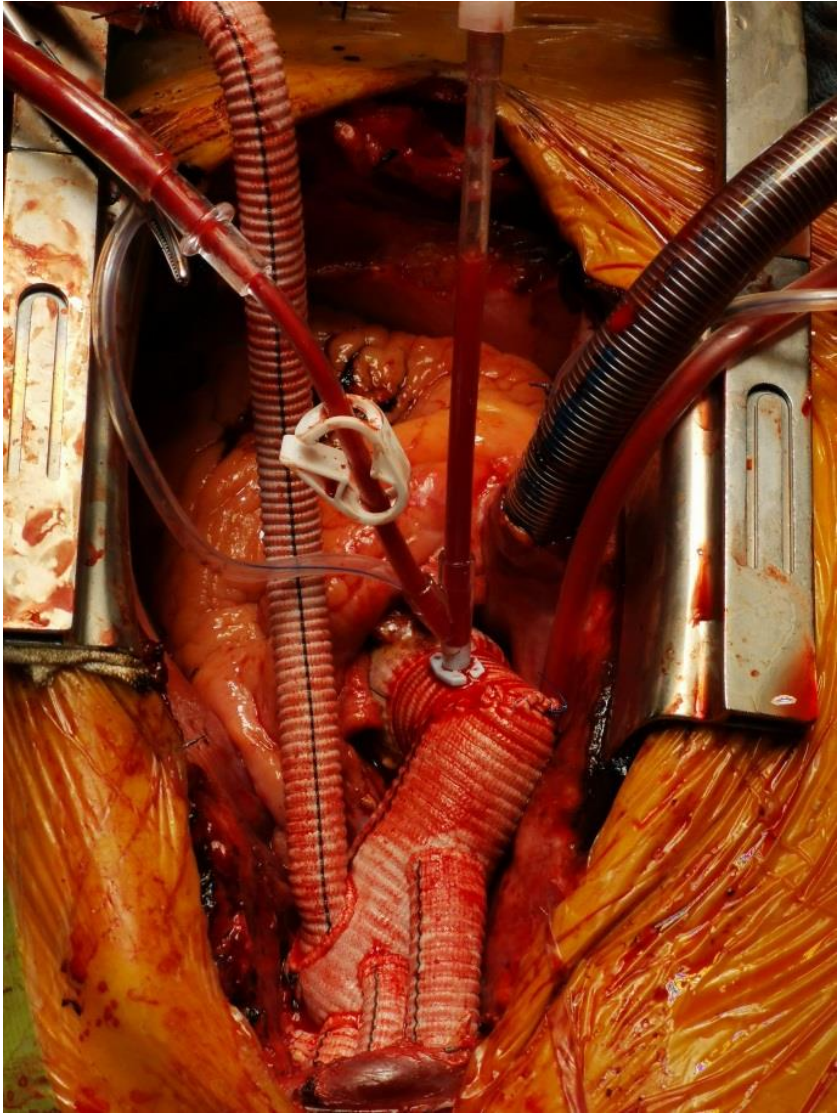
Počet operácií ATAA : 806

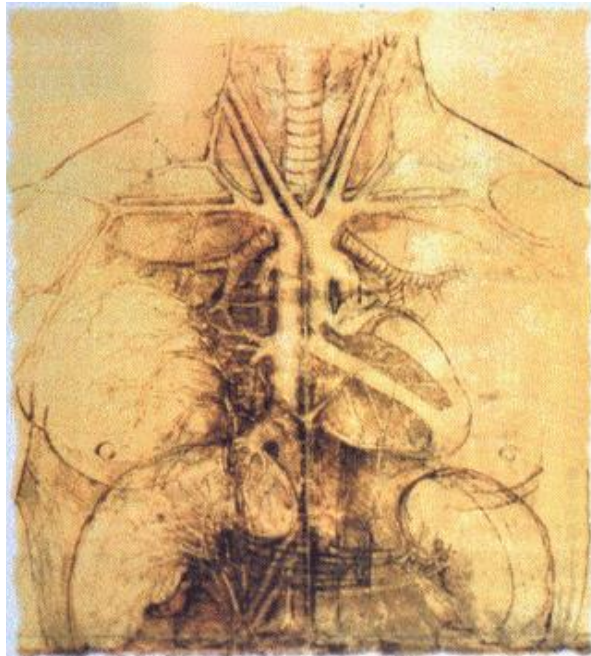










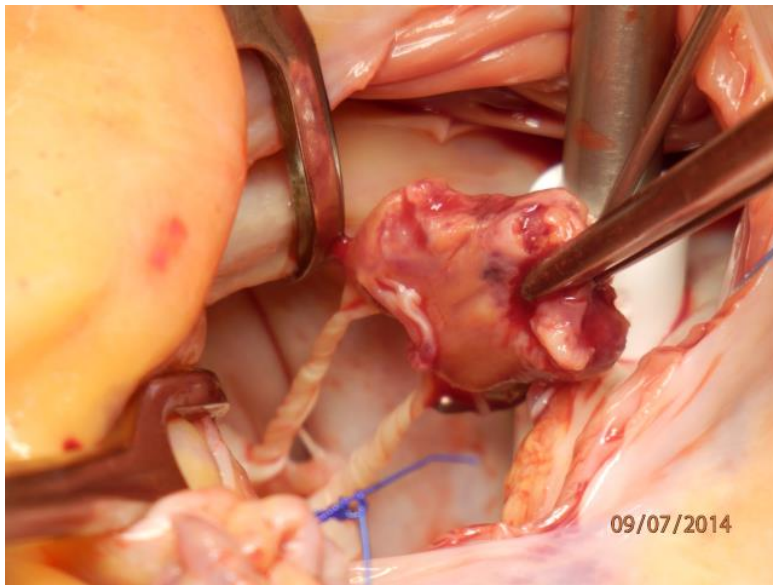




20.02.2014 prvé použitie ECMO perioperačne



25.03.2014 prvé použitie ECMO - cathlab



09.07.2014 použitie ECMO – ruptúra papilárneho svalu MV

K A M ?



Možné, očakávateľné a žiadúce posuny

- Metodické
- Technické
- Organizačné (cievna chirurgia, úsek podporných cirkulačných systémov...)
- Metodologické
- Technologické
- Manažment pacienta po op. – spolupráca Sliač
- Spracovanie dát



Počty indikovaných pacientov

Nákladovosť

Nadčasová práca/mzdy/

Počty operovaných pacientov

Ekonomické limity ZP

Fluktuácia



- Definovanie skutočnej potreby obyvateľstva na KCH výkony vs. aktuálne dosiahnuteľná kapacita
- Stanovenie stratégie personálnej stability slovenského zdravotníctva (nedostatok personálu, mzdy, pohotovostné služby, veková stratifikácia...)
- Reštrukturalizácia lôžok, spravovanie čakateľských zoznamov...

